

MONTHLY MEMBERSHIP PROGRESS REPORT

LOCATION TEXAS

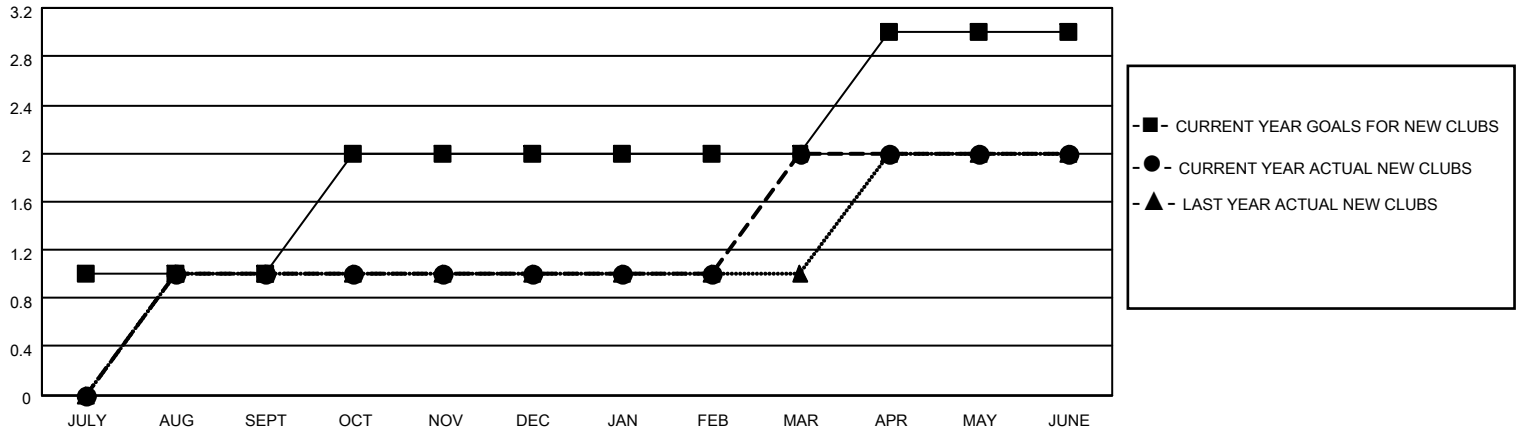
District 2 X1

Results as of: 6/30/2023

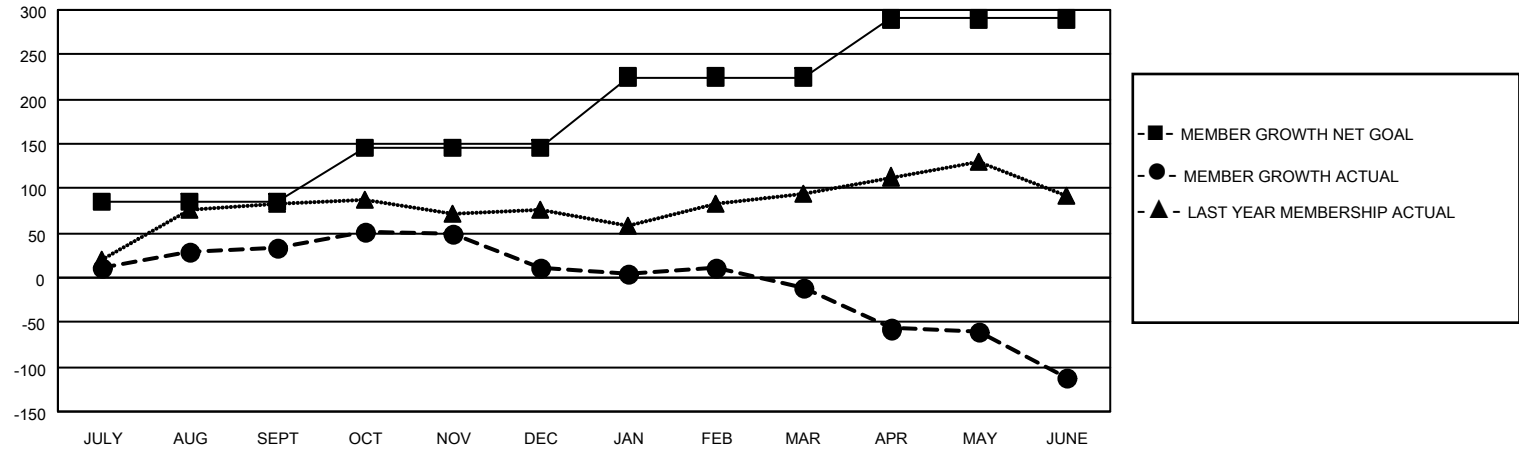
Clubs			
RESULTS FOR 2022-2023			
QUARTER	NEW CLUB GOAL	NEW CLUBS	DROPPED CLUBS
JULY/AUG/SEPT	1	1	0
OCT/NOV/DEC	1	0	1
JAN/FEB/MAR	0	1	0
APR/MAY/JUNE	1	0	0

Members			
RESULTS FOR 2022-2023			
QUARTER	MEMBER GROWTH NET GOAL	MEMBER GROWTH ACTUAL	DROPPED MEMBERS ACTUAL (including transfers)
JULY/AUG/SEPT	85	118	75
OCT/NOV/DEC	60	84	93
JAN/FEB/MAR	80	86	93
APR/MAY/JUNE	65	95	183

GOALS AND ACTUAL NEW CLUBS CUMULATIVE



GOALS AND ACTUAL MEMBERS CUMULATIVE



DROPPED CLUBS: 1	
DROPPED MEMBERS	
DECEASED	21
CLUB CANCELLED	0
OTHER	423
TOTAL	444

49 CLUBS OF 62 ADDED 1 OR MORE NEW MEMBERS

[CLICK HERE FOR CUMULATIVE MEMBERSHIP DATA](#)

<u>GENDER DISTRIBUTION</u>	
MALE	1,060 (60.57%)
FEMALE	689 (39.37%)
NON BINARY	1 (0.06%)
PREFER NOT TO ANSWER	0 (0.00%)
<hr/>	
TOTAL FAMILY UNIT MEMBERS	294
<hr/>	
FAMILY MEMBERS PAYING HALF DUES	151